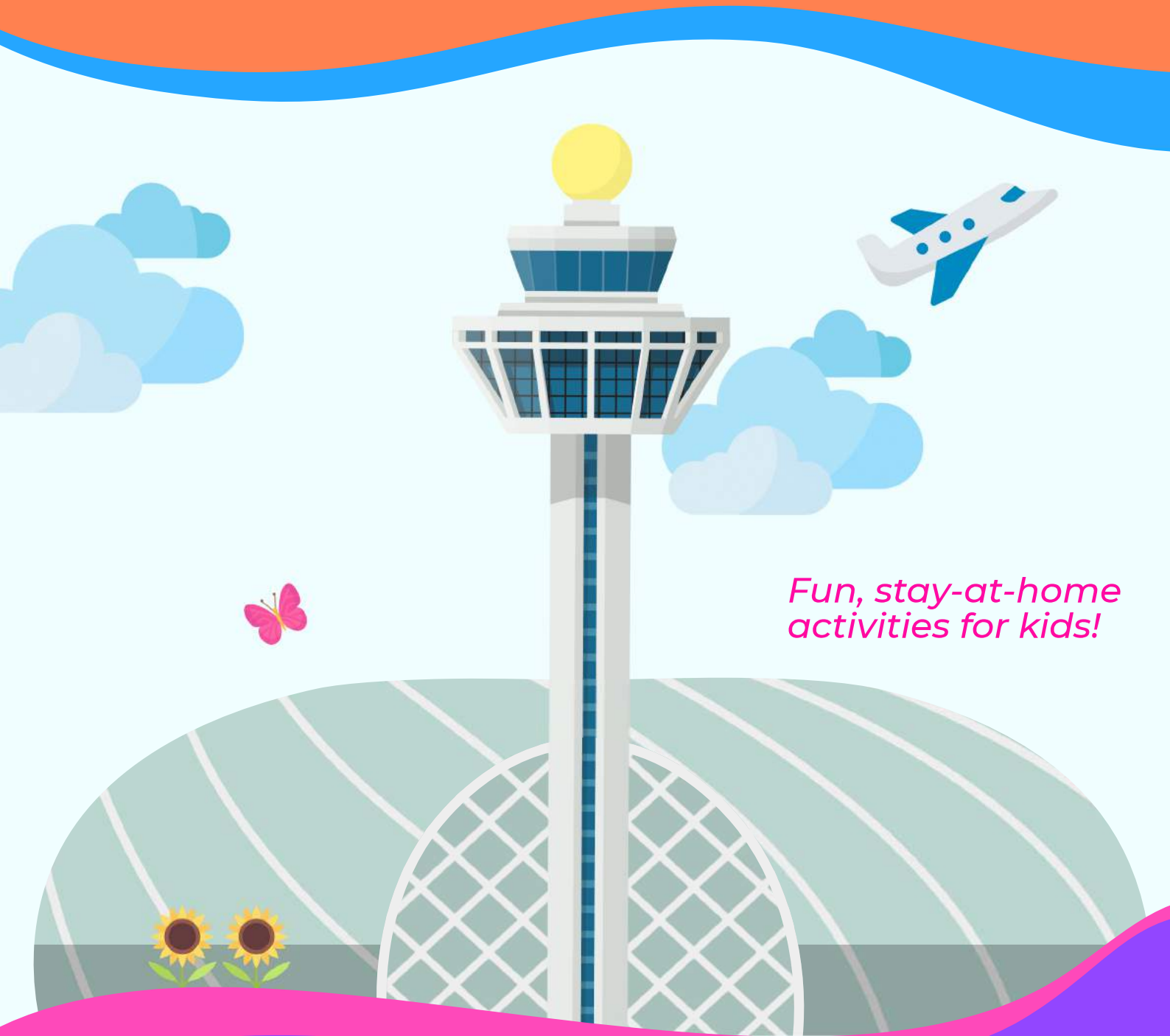


# CHANGI KIDS CLUB

*Activity Book for 7 to 10 year olds*



*Fun, stay-at-home  
activities for kids!*

*Name*

# CONTENTS

Cover Page	1
Contents	2
<b>Activities</b>	
Baggage Handling Process	3 - 4
Crossword Puzzle	5 - 6
Equation games	7 - 9
Geo Challenge	10 - 11
Spot the Plane	12 - 13
<b>Answers</b>	14
Baggage Handling	15
Crossword Puzzle	16
Equation Games	17 - 18
Geo Challenge	19
Spot the Plane	20

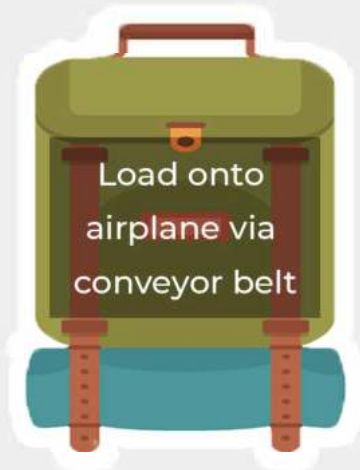
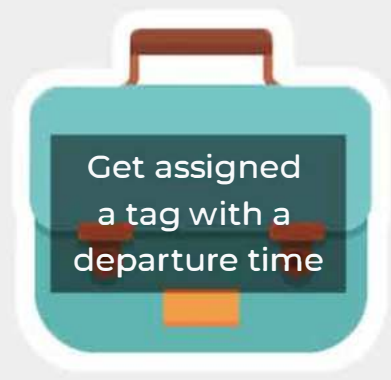


# BAGGAGE HANDLING PROCESS



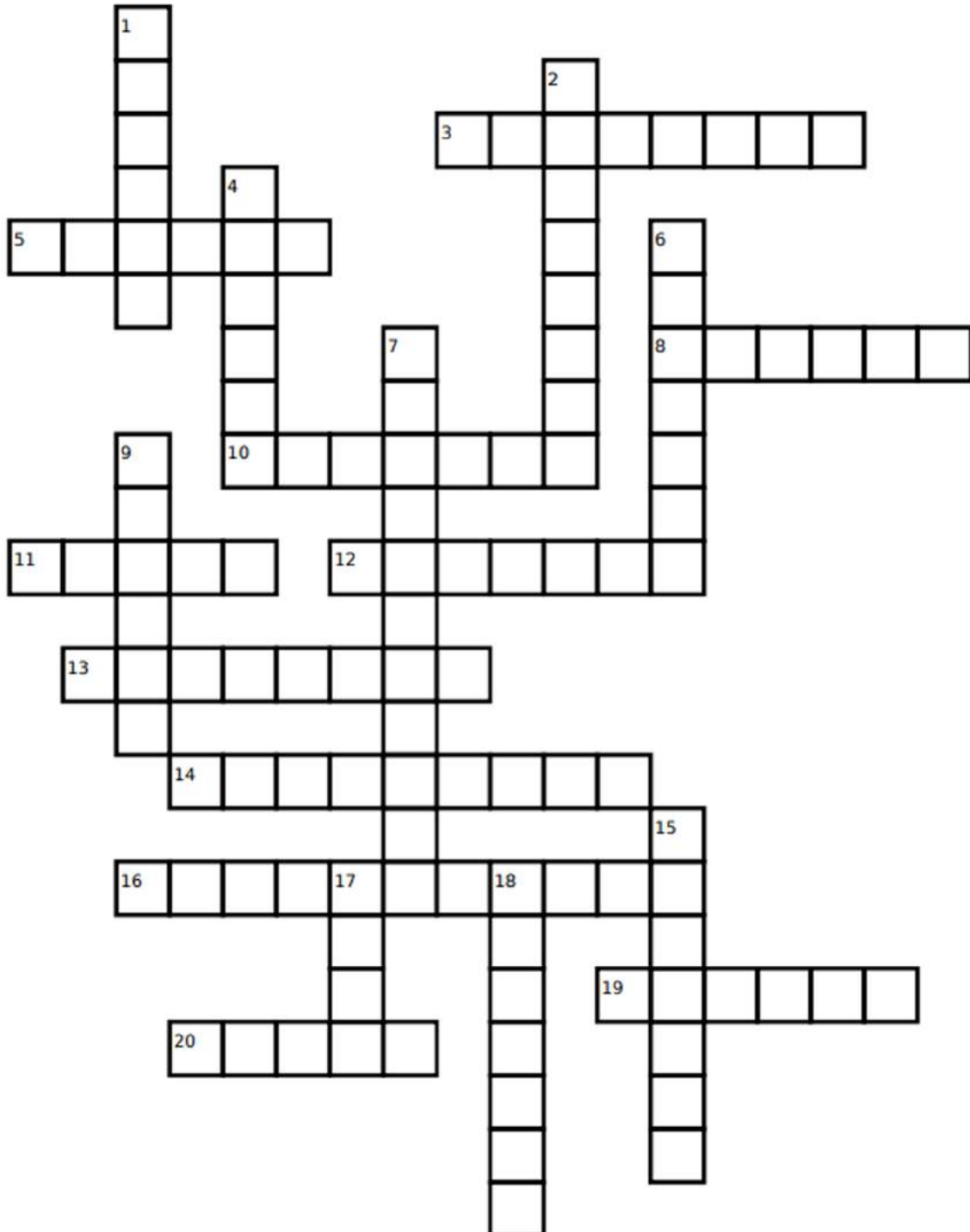
# BAGGAGE HANDLING PROCESS

Cut out these baggages!



# CROSSWORD PUZZLE

Complete the Changi-themed crossword puzzle!



## Did you know?

From April 2018 to March 2019, there were over 66 million passengers that went through Changi Airport. That's more than 10 times the population of Singapore! Besides arriving or departing from Changi Airport, there are also many transiting passengers - they land at Changi Airport to take another flight towards another destination.

*Clues are on the next page!*

# CROSSWORD PUZZLE

## Clues

### **Down:**

#### **Aircraft facts**

1. The American aircraft manufacturing company
6. The section of the plane where pilots control the plane from
7. The part of the plane that touches the floor first when landing
9. The European aircraft manufacturing company
15. The two cylinder-shaped machines on each wing
18. The process in which an aircraft leaves the ground

#### **Changi facts**

2. The document needed to leave or enter a country
4. The floors around Changi Airport's transit areas are covered with this
17. The area where passengers wait to board their flight

### **Across:**

#### **Aircraft facts**

3. The equipment on each seat to keep passengers safe
5. The road where aircrafts take off
11. In addition to passengers and luggage, airplanes also carry this
12. The bent/folded tip of an aircraft's wing
13. The main body of an aircraft
19. Where passengers can look out from the aircraft

#### **Changi facts**

8. This is a prickly plant that is common in dry deserts and can be found in Terminal 1
10. The process in which passengers land at the airport to take another flight to another destination
14. There is a garden full of this flying colourful insect in Terminal 3
16. The zone where passengers' passports are stamped before they collect their luggage at arrival
20. The building with the Rain Vortex at Changi Airport

# EQUATION GAMES

Solve the equations

1)

$$\text{Orchid} + \text{Orchid} + \text{Orchid} = 90$$

$$\text{Orchid} + \text{Sunflower} + \text{Sunflower} = 230$$

$$\text{Lotus} + \text{Sunflower} + \text{Orchid} = 210$$

$$\text{Sunflower} - \text{Orchid} + \text{Lotus} = ?$$

2)

$$\text{Daisy} + \text{Daisy} = 36$$

$$\text{Daisy} + \text{Daisy} + \text{Lotus} = 60$$

$$\text{Cactus} + \text{Cactus} + \text{Lotus} = 57$$

$$\text{Daisy} + \text{Lotus} - \text{Cactus} = ?$$

# EQUATION GAMES

## Brain Teaser

3)





# EQUATION GAMES

## Fun facts about plants



### *Did you know?*

Water lilies create shade and protection for fish in landscape ponds.



### *Did you know?*

Daisies are found everywhere on Earth except Antarctica.



### *Did you know?*

Changi Airport has our very own orchid called "Changi Airport Orchid" It was named after Changi Airport in May 1997 to commemorate the opening of the Orchid Garden in Terminal 2.



### *Did you know?*

The average lifespan of a cactus plant is between 10 to 200 years.



### *Did you know?*

Sunflower is the only flower with *flower* in its name!

# GEO CHALLENGE

Complete the flipboard!

*\*Instructions are on the next page*

D E P A R T U R E S

TO

CH\_N\_

\_AP\_\_

\_U\_T\_\_LI\_

\_O\_T\_ A\_\_\_C\_

G\_\_\_\_NY

C\_N\_D\_

\_E\_ \_EA\_A\_D

\_\_D\_A

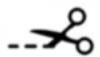
CHANGI AIRPORT

## Guess the destination

a. Fill in the missing letters to name the countries

## Match the flag

- a. Print out the sticker cut-outs
- b. Cut out the sticker cut-outs
- c. Using glue, paste the sticker cut-outs on the flight information display board



### ***Did you know?***

*\*\*\*Read only after finishing the activity*

China owns all the pandas in the world. Do you remember Kai Kai and Jia Jia? They travelled over 3,835km from China to be here with us!

Japan is Nihon or Nippon in Japanese, which means “the sun’s origin”.

Australia is both a country and a continent.

South Africa became the first African nation to host the World Cup in 2010.

Germany is home to these popular brands: Adidas, Nivea, BMW and Mercedes-Benz.

India is where chess was first invented.

Canada has the longest coastline in the world.

New Zealand’s North of Gisbone gets the world’s first sunrise everyday.

*do not print this page double sided*

# PLANE SPOTTING

Read the information on planes below and help us to find them on the next page!



Boeing 747



Airbus A380

## NARROW-BODY PASSENGER JETS

Narrow-body Passenger Jets have a single-deck and only a single aisle (walkway) on the inside. The only way to tell these from the outside is to compare their sizes to Jumbo Jets, as these planes are much smaller! These aircrafts include the Boeing 737 and Airbus A320.



Boeing 737



Airbus A320



ATR-72

## TURBOPROP

Passenger Turboprops have propellers (blades that look like fans) that are visible on the outside, as circled on the diagram. They are some of the smallest aircrafts at Changi Airport, and you'll most likely be looking at the ATR-72 if you spot one!

## CARGO JETS

Cargo Jets come in various sizes, from smaller to bigger jets! The way to spot them is to see the number of windows they have. If they only have a few windows, they are most likely carrying cargo instead of passengers. One example of a cargo plane is the Boeing 747F.



Boeing 747F

# SPOT THE PLANES

Circle the planes in different colours  
according to their types!

Circle Jumbo Passenger Jets in **blue**

Circle Narrow-body Passenger Jets in **red**

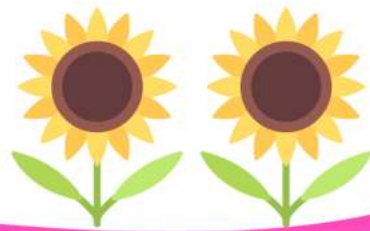
Circle Turboprops in **black**

Circle Cargo Jets in **green**



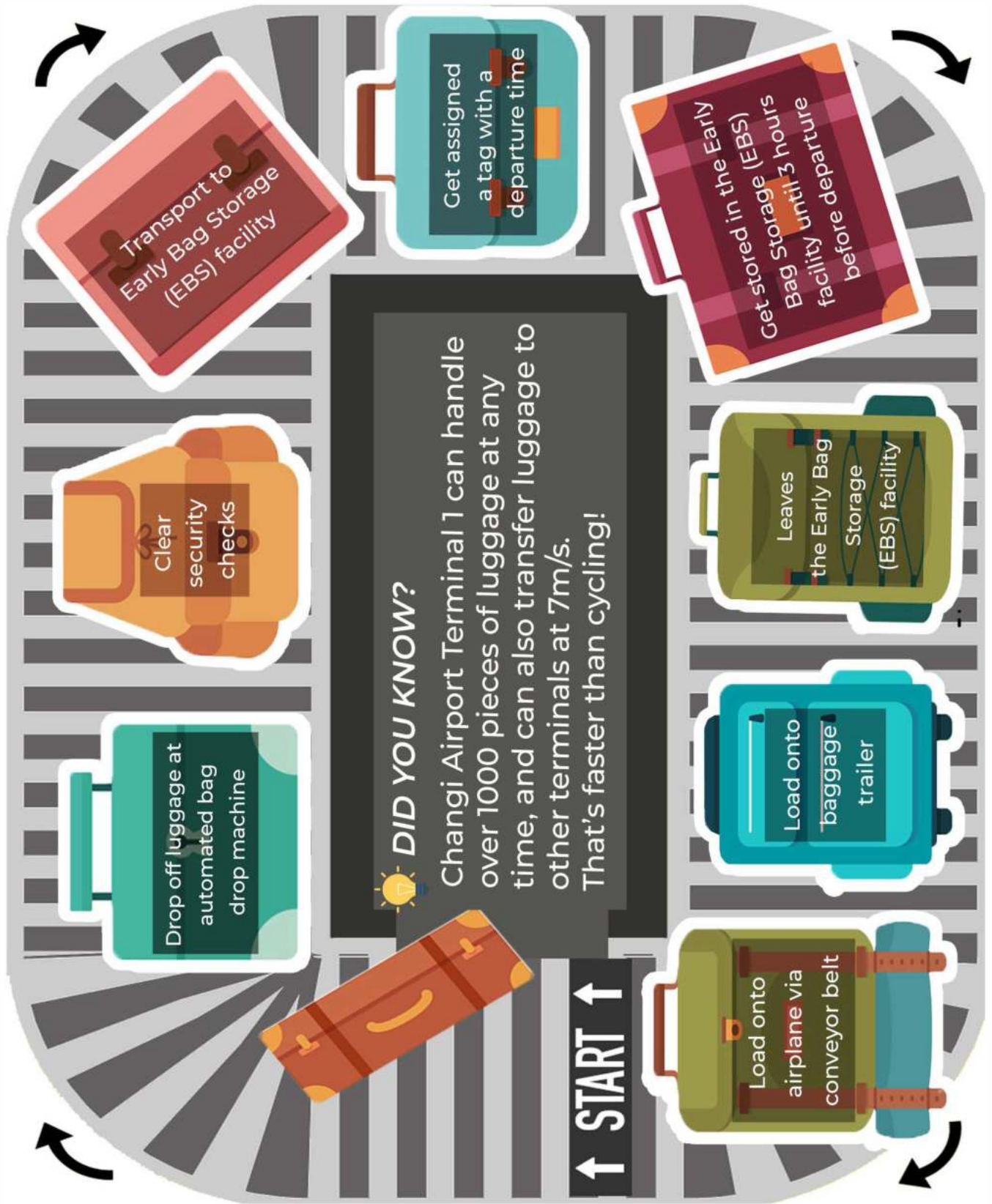


# ANSWERS



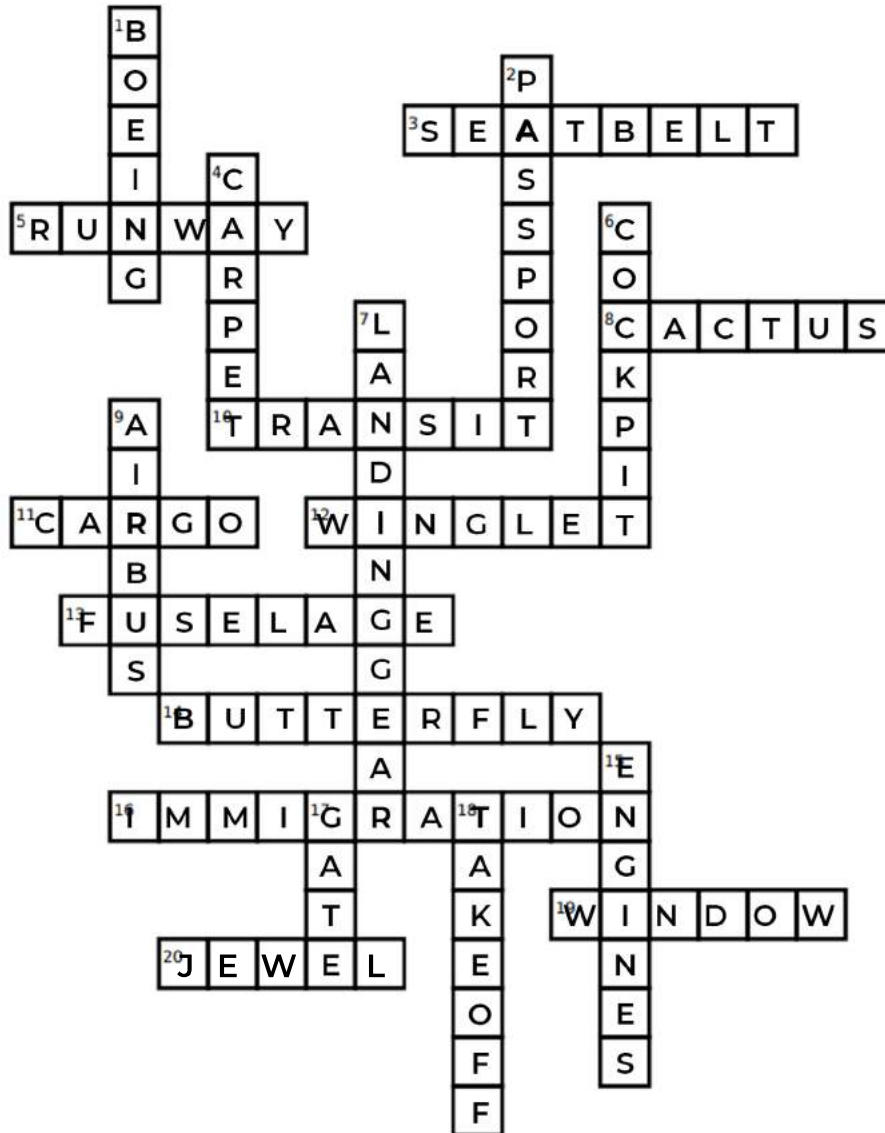
# BAGGAGE HANDLING PROCESS

Answer Key



# CROSSWORD PUZZLE

## Answer key



### Down:

#### Aircraft facts

1. The American aircraft manufacturing company
6. The section of the plane where pilots control the plane from
7. The part of the plane that touches the floor first when landing
9. The European aircraft manufacturing company
15. The two cylinder-shaped machines on each wing
18. The process in which an aircraft leaves the ground

#### Changi facts

2. The document needed to leave or enter a country
4. The floors around Changi Airport's transit areas are covered with this
17. The area where passengers wait to board their flight

### Across:

#### Aircraft facts

3. The equipment on each seat to keep passengers safe
5. The road where aircrafts take off
11. In addition to passengers and luggage, airplanes also carry this
12. The bent/folded tip of an aircraft's wing
13. The main body of an aircraft
19. Where passengers can look out from the aircraft

#### Changi facts

8. This is a prickly plant that is common in dry deserts and can be found in Terminal 1
10. The process in which passengers land at the airport to take another flight to another destination
14. There is a garden full of this flying colourful insect in Terminal 3
16. The zone where passengers' passports are stamped before they collect their luggage at arrival
20. The building with the Rain Vortex at Changi Airport



# EQUATION GAMES

## Answer Key

1)

$$\text{Orchid} + \text{Orchid} + \text{Orchid} = 90$$

value of one Orchid is  $90 \div 3 = 30$

$$\text{Orchid} + 2 \times \text{Sunflower} + 2 \times \text{Sunflower} = 230$$

value of one Sunflower is  $(230 - 30) \div 4 = 50$

$$\text{Water Lily} + 2 \times \text{Sunflower} + \text{Orchid} = 210$$

value of one Water Lily is  $210 - (50 \times 2) - 30 = 80$

$$\text{Sunflower} - \text{Orchid} + \text{Water Lily} = 100$$

50                      30                      80

2)

$$2 \times \text{Daisy} = 36$$

value of one Daisy is  $36 \div 2 = 18$

$$\text{Daisy} + \text{Daisy} + 2 \times \text{Water Lily} = 60$$

value of one Water Lily is  $(60 - 36) \div 2 = 12$

$$2 \times \text{Cactus} + \text{Cactus} + \text{Water Lily} = 57$$

value of one Cactus is  $(57 - 12) \div 3 = 15$

$$2 \times \text{Daisy} + 2 \times \text{Water Lily} - \text{Cactus} = 45$$

36                      24                      15

# EQUATION GAMES

## Answer Key

3)



# GEO CHALLENGE

## Answer Key

DEPARTURES

TO



CHINA



JAPAN



AUSTRALIA



SOUTH AFRICA



GERMANY



CANADA



NEW ZEALAND



INDIA

CHANGI AIRPORT

# SPOT THE PLANES

## Answer Key

- Circle Jumbo Passenger Jets in blue
- Circle Narrow-body Passenger Jets in red
- Circle Turboprops in black
- Circle Cargo Jets in green

